



CREEKSIDE VILLAGE

- 267 Homes
 - Two Bedroom Patio Homes
 - Three Bedroom Patio Homes
 - Two Bedroom Town Homes
 - Three Bedroom Town Homes
- Price Range - \$130's to low 200's





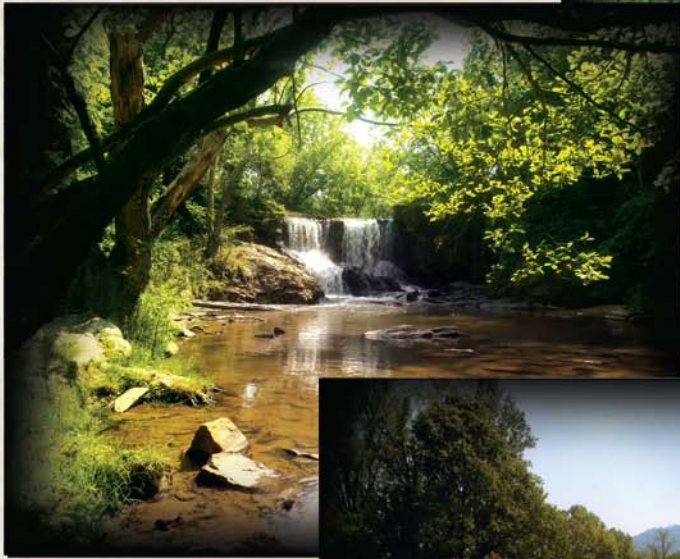
AMENITIES

- 2.70 Acres Recreational Area
– w/ Pond
- Walking trails
- Proposed Footbridge to Lake Louise





Property Views



CREEKSIDE VILLAGE

Site Plan



MOON  MCMANUS
WHERE IDEAS ARE DEVELOPING

DESIGN ASSOCIATES
ENGINEERS, ARCHITECTS & LAND PLANNERS
1293 Hendersonville Road
Suite 21
Asheville, NC 28803
828-277-7410
Fax 828-277-7413

Beverly-Hanks & ASSOCIATES

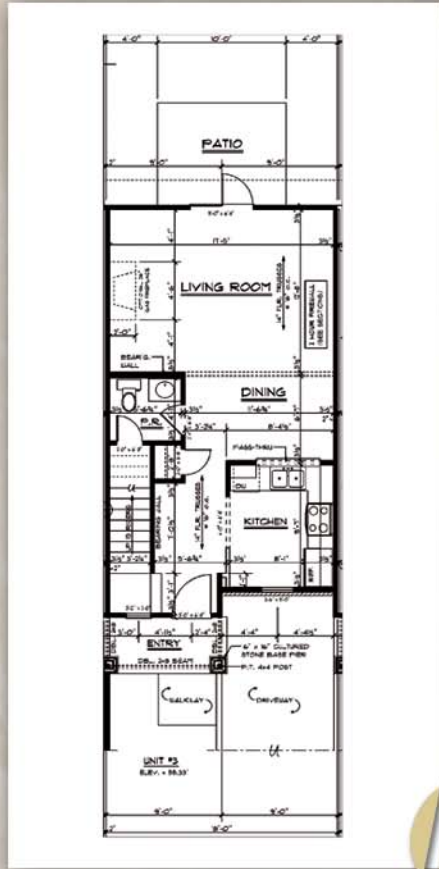


Existing North Carolina Projects



CREEKSIDE VILLAGE

Town Homes - Two Bedroom



CREEKSIDE VILLAGE

Patio Homes

